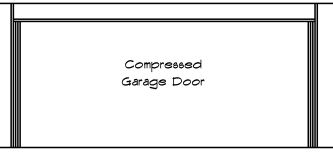


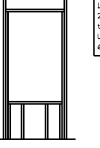
Brick
 Masonry Veneer, steel lintels
 4" min bearing each end
 Veneer ties: Masonry veneer anchors
 Maxed wire #11 or #22 corrugated metal;
 32" o.c. horizontal spacing 2 2/3 square
 feet area supported



All windows are Vinyl Frame with Double Frame with Low E. Unless Otherwise Noted
 U-Factor = 0.28
 Window SHGC = 0.26
 Door U-Factor = 0.25

Note: 1 Denotes Smoke Detector Linked Together and Battery Backup

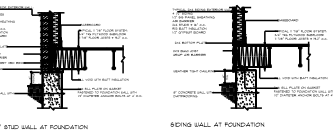
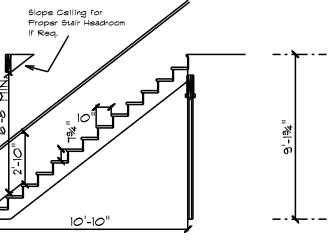
Compressed Single Window



3/2x12s For Header
 2 Jack Studs on Each Side for all Load Bearing Openings
 2 Jack Studs per side to be used for Openings Unless Noted Otherwise 6" and Larger

5/8" Type "X" Firecode Drywall All of Garage and Ceiling of House
 1/2" Type "X" Firecode Drywall Walls of House

All sill plates are ACG treated timber



2x3-3/4" LVL For Header
 3 Jack Studs on Each Side
 Nail Pattern 6" O.C.

5/8" Type "X" Firecode Drywall Garage walls in house and Ceiling of House
 1/2" Type "X" Firecode Drywall Walls of House

February 17, 2015
 Drawn by: Josh Buck
 SCALE: 3/32" = 1'

New Tradition Homes
 The Liberty Expanded

Area
1st Floor 1624
Total Living 1624
Basement 1512
Garage 454
Covered Porch 114

Lot 27 Shady Spring